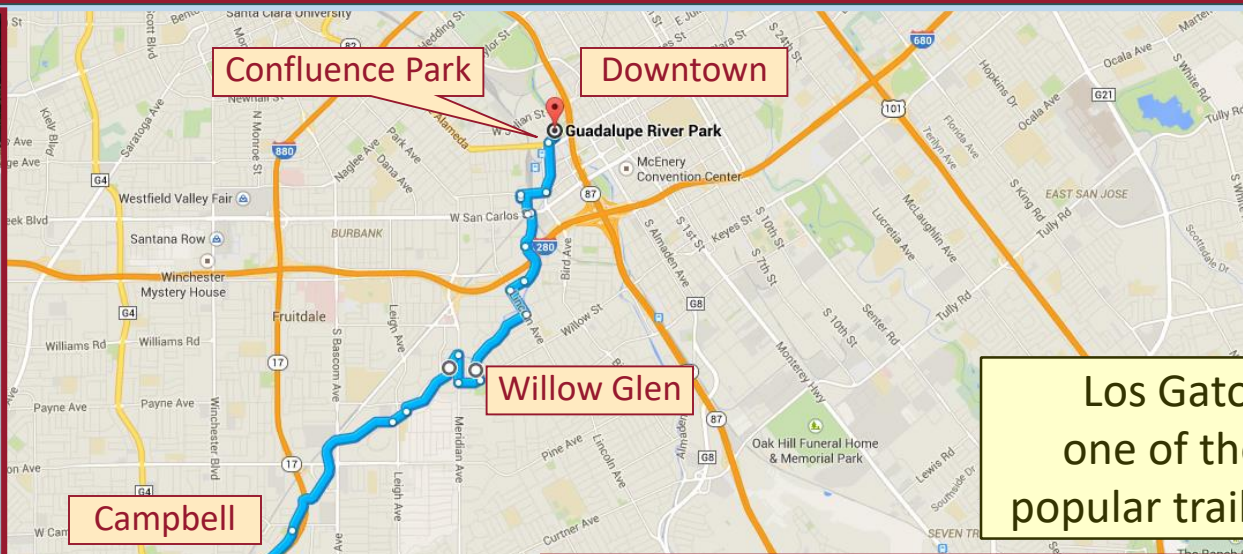


# ***Parks and Trails for All***

*-- a quick overview*

Larry Ames  
Larry@L-Ames.com

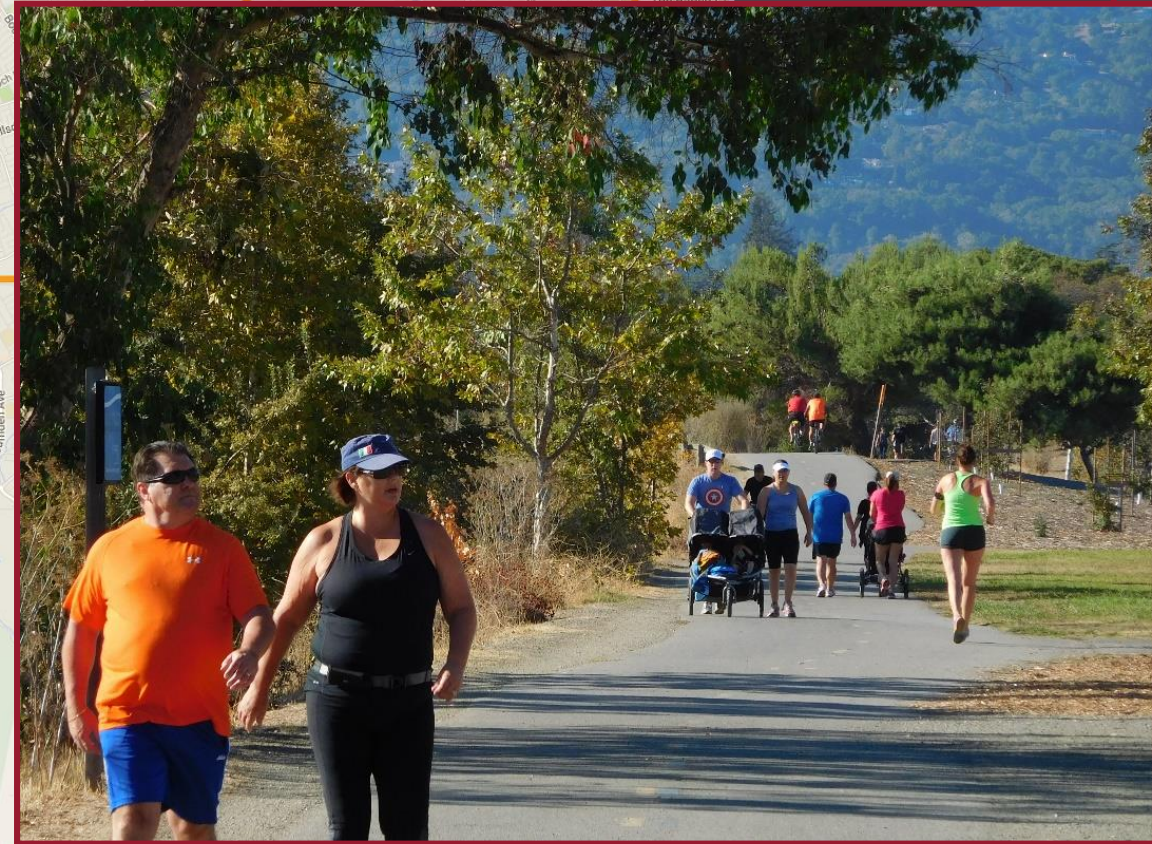




Los Gatos Creek Trail is one of the first and most popular trails in the South Bay

Los Gatos Creek Trail is 14 miles long, downtown SJ to the Santa Cruz Mountains.

I gave this presentation to the SVO last year: see [www.L-Ames.com/LGCT\\_2018.pdf](http://www.L-Ames.com/LGCT_2018.pdf)





Trails can provide easy access to Diridon Station

Diridon Station

Google's area

3 miles to Diridon

to Campbell & Los Gatos

to Alviso

Downtown San Jose

(WG Trestle)

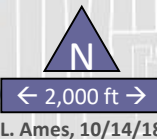
Three Creeks Trail

Possible alignment of future trail

Existing trail

future Guadalupe River Trail

to Almaden







10/20/07

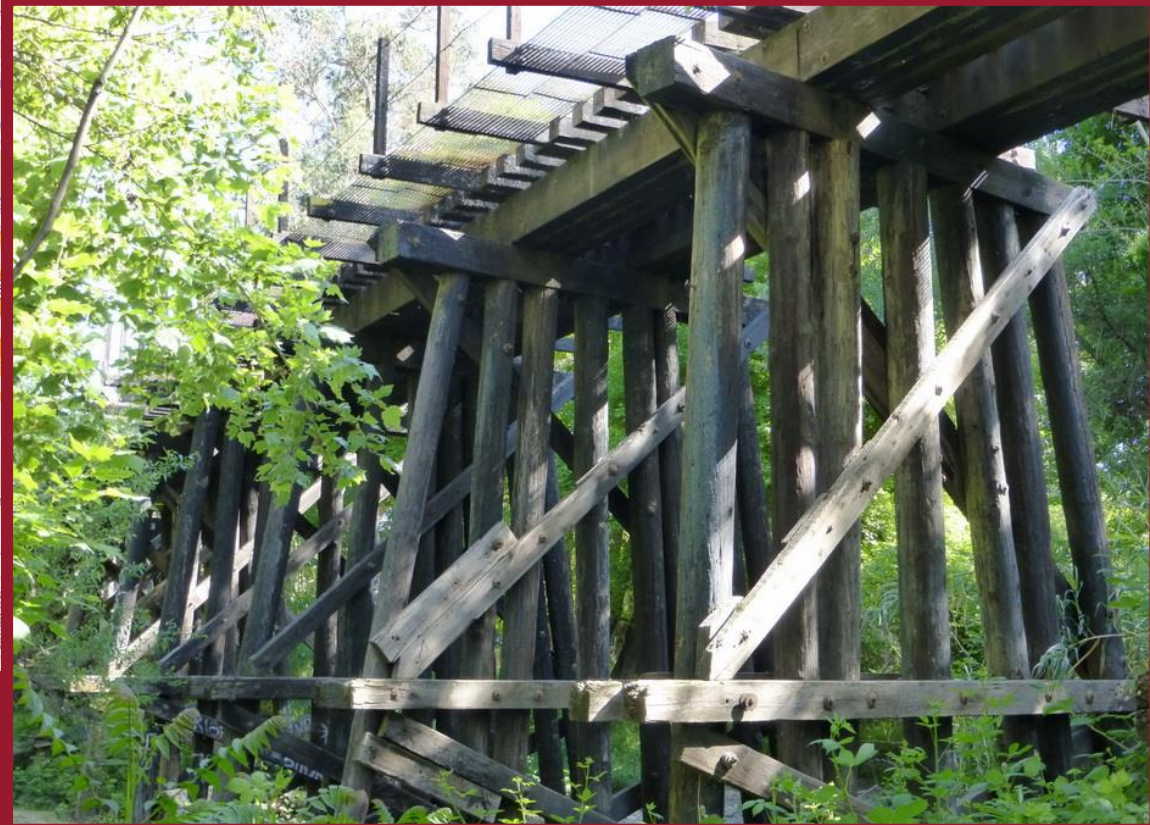
It took over 20 years to open this segment of trail...

There are a number of ways of "filling the gap" between Meridian and Lincoln: just need to work w/ the community to select the best alternative!

[www.WGTrestle.org](http://www.WGTrestle.org)

Three Creeks Trail

How to connect the Three Creeks & Los Gatos Trails?  
Restore a historic railroad trestle,  
or replace it with a generic prefab steel truss?





Double barrel concrete box culvert, each 17 feet high & 22.6 feet wide.

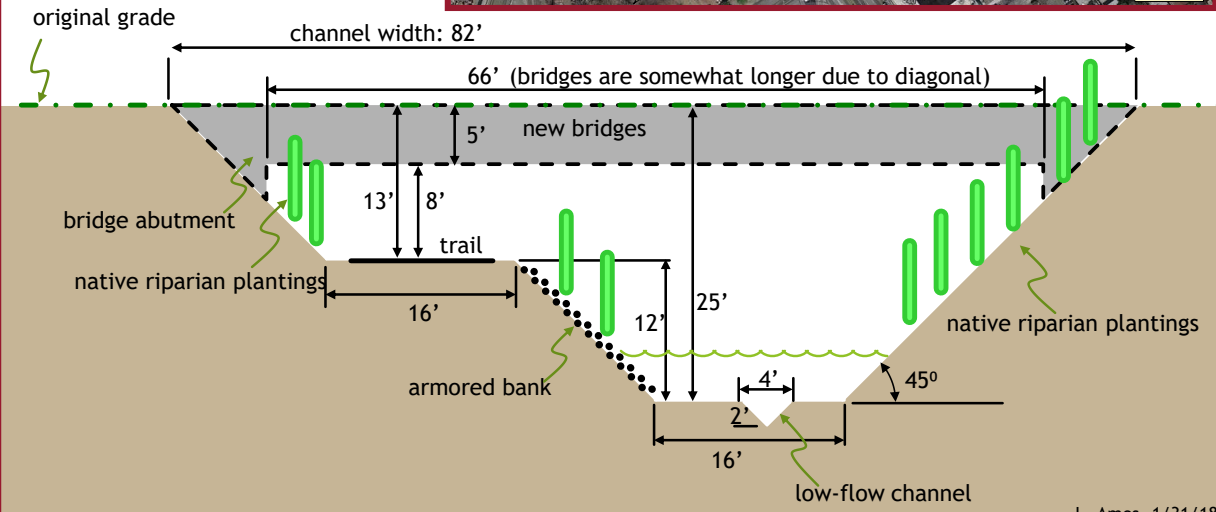


New CalTrain bridge supposedly has clearance for trail to pass



Concept for "daylighting" the Los Gatos Creek

Conceptual Diagram to Free the Los Gatos Creek





How about making the creek  
by the Diridon Station  
an *attraction*?

Diridon Station Area Advisory Group (SAAG):  
<https://www.diridonsj.org/>



San Antonio Texas is famous for its “River Walk”:  
2.5 mile long, lined with shops & restaurants;  
almost like a Disneyland ride.

San José has the potential, but we should do it  
“San José style” — trails and attractions  
along the sides, but natural and wild at heart!

Habitat & the public can coexist:  
in Campbell, the LG Crk Trail is used by hundreds daily,  
w/ trail on both sides, & the habitat has grown & thrived.



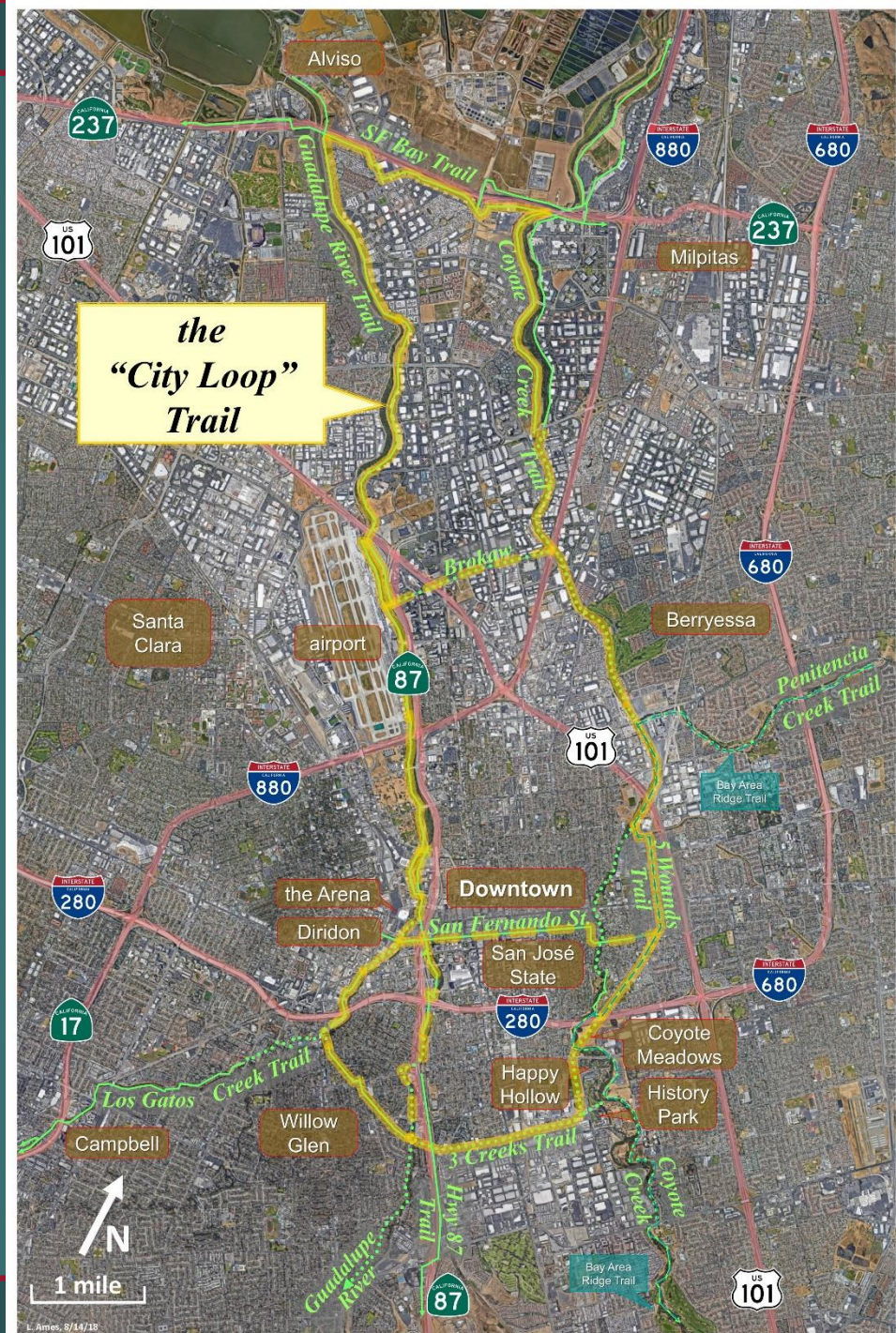




# City Loop Trail

- Concept for a 24-mile loop trail
- Comprised of existing and planned trails
- Way of raising public awareness and to advocate for its completion.

<http://www.SaveOurTrails-scc.org/>





June 22, 2018  
10 AM - 1 PM

13-mile Road  
and Trail Bike  
Ride

Hosts

Save Our Trails

Coyote Meadows  
Coalition

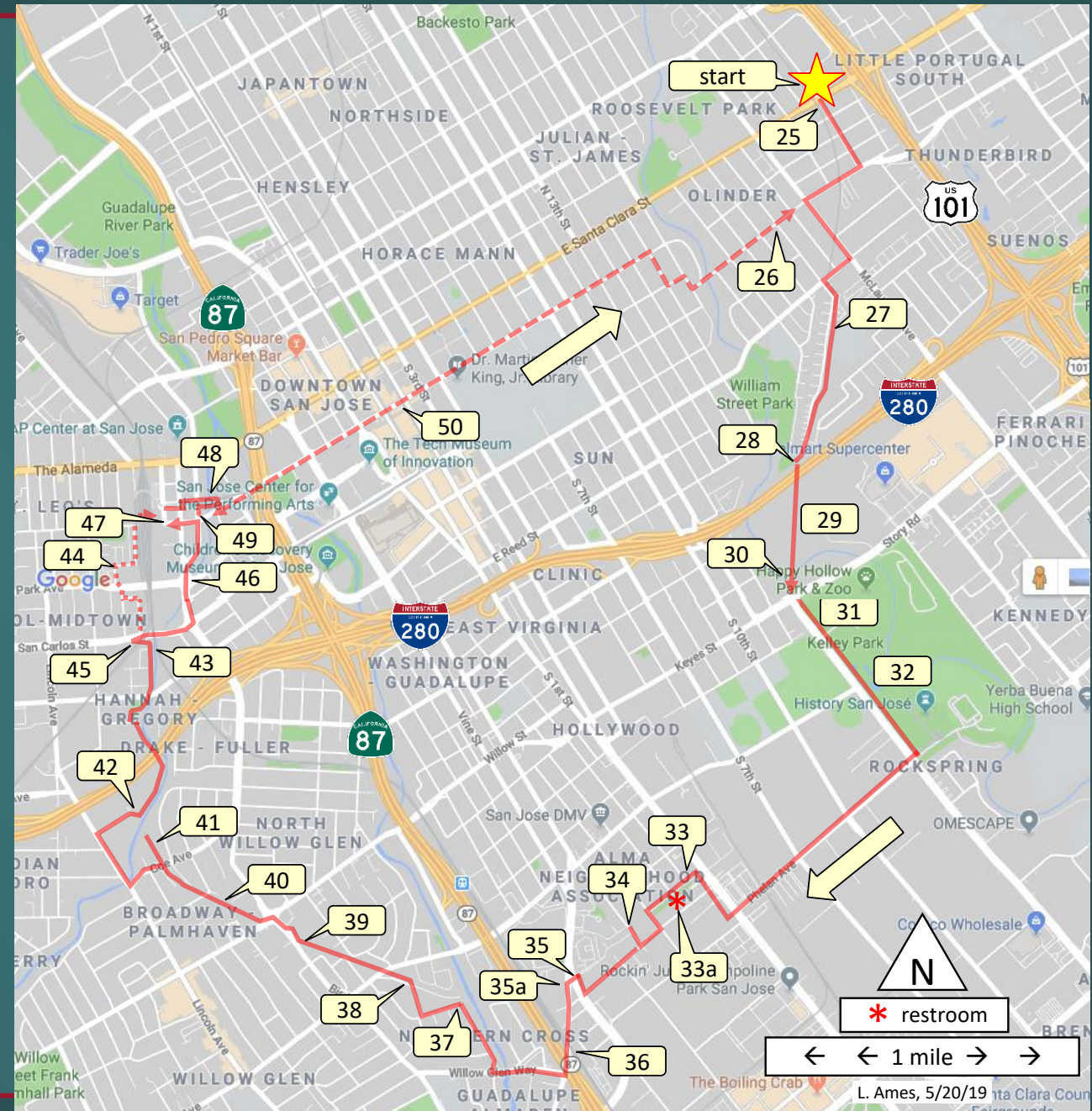


# The City Loop Trail Bike Outing

Five Wounds Portuguese Church  
1375 East Santa Clara Street  
San Jose, CA 95116



RSVP  
<http://bit.ly/JuneCityLoop>





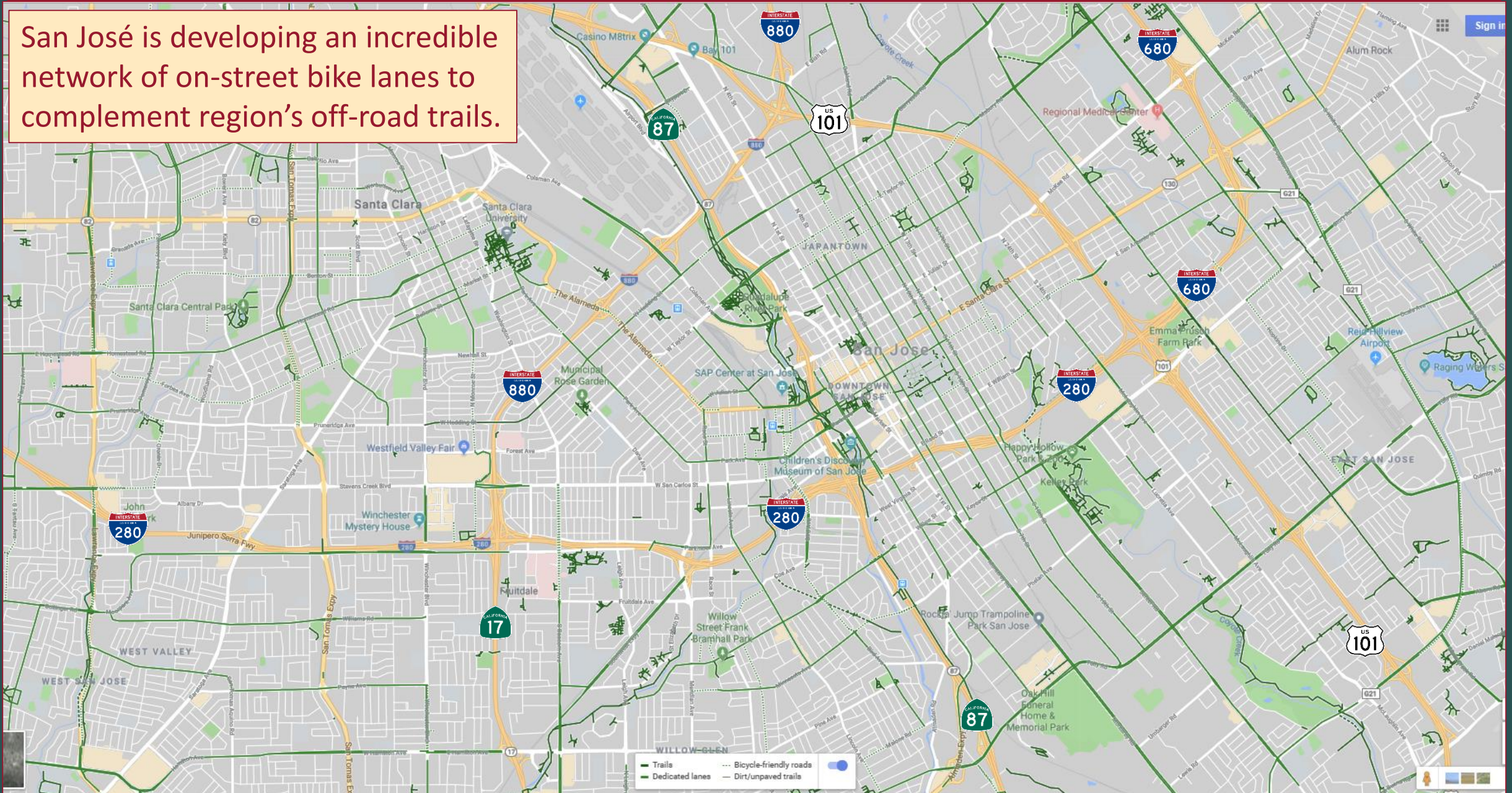
This aerial map illustrates the Coyote Creek Watershed, showing its geographical context and key features. The watershed is outlined in pink, and the project boundaries are marked with a yellow dashed line. The map includes the following labels:

- Streets:** Margaret St., 11th St., 10th St., Senter Rd, Story Rd, Roberts Ave, Remillard Ct, Sinclair Fwy, Joseph P. Sinclair Fwy, Woodland Terrace, Martha St, Bestor St, and 12th St.
- Parks and Recreation:** William St. Park, Olinder Park, Olinder Dog Park, Happy Hollow Zoo, Kelley Park, and Little Saigon.
- Landmarks and Infrastructure:** hills (landfill), Walmart, old railroad Right-of-Way, hills (landfill), and lowlands (former homeless encampment).
- Water Features:** Coyote Creek, Coyote Creek Trail, and Coyote Crk Trestle.
- Other Features:** radio towers, riparian ("creekside") habitat, parking, and the 280 Freeway.





San José is developing an incredible network of on-street bike lanes to complement region's off-road trails.

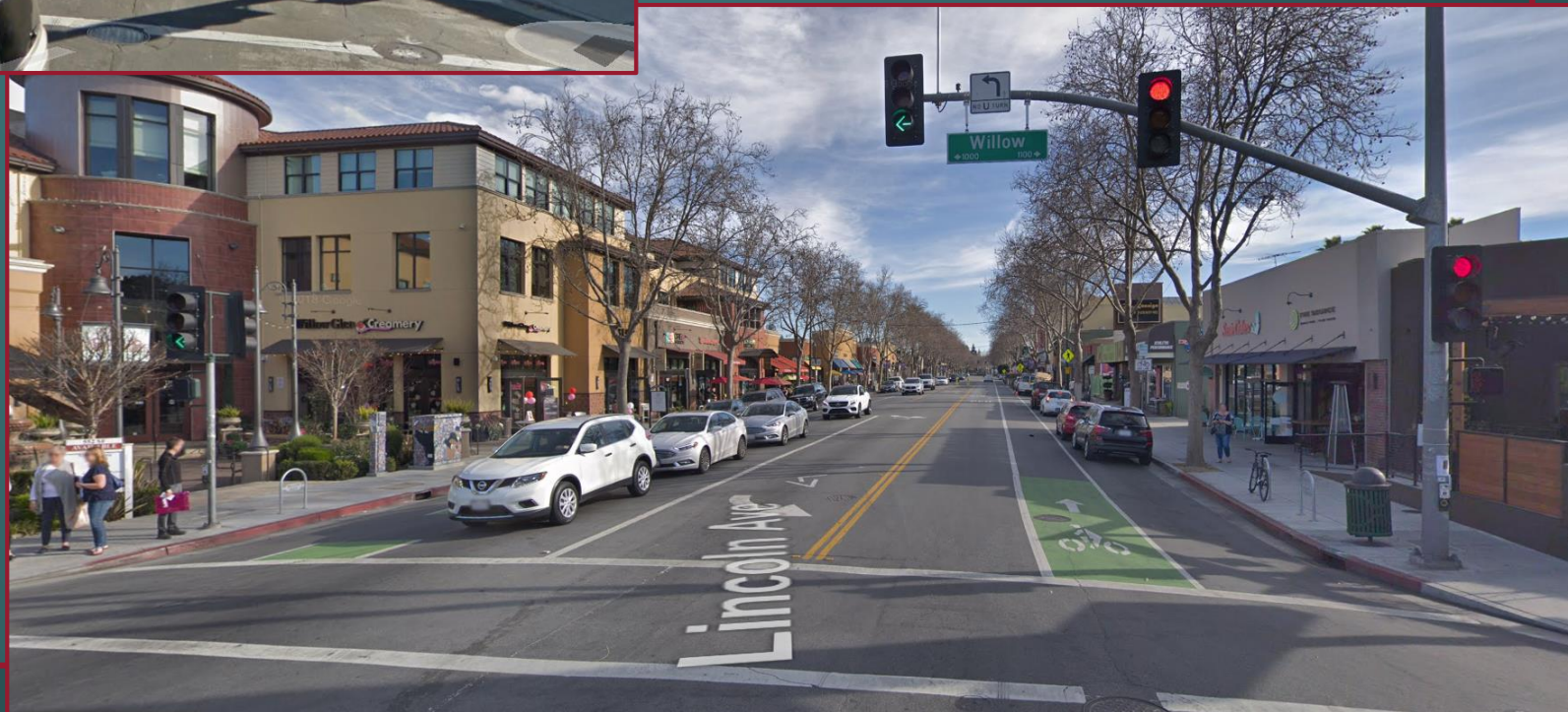






Before  
Road Diet  
(Dec. 2013)

After  
Road Diet  
(Feb. 2018)





# Inventory of Bike-accessible Freeway Crossings

## Subjective appraisal of crossings:

- ↔ nice trail undercrossing or bike-bridge
- ↔ quiet street without interchange
- ↔ fairly busy; some w/ bike-lanes
- ↔ pretty hectic: traffic and/or off-ramps.
- ↔ downright scary; not for the faint-of-heart
- ↔ possible site for needed connection?

Personal assessments by L. Ames, Nov. 2018

Note that there currently are no “nice” or “quiet” crossings of US-101 for ~10 miles, between Fwy-87 to south of Yerba Buena.

Diridon Station

3 miles

5 miles

1 mile



## Equality



## Equity



© 2017 Robert Wood Johnson Foundation.  
May be reproduced with attribution.

2017 Robert Wood Johnson Foundation

From ActivateSJ -- <http://www.sanjoseca.gov/index.aspx?NID=6331>



# Goals in "ActivateSJ" (GreenPrint update)

- <http://www.sanjoseca.gov/index.aspx?NID=6331>
- This is a rewrite of the 2000 GreenPrint (PRNS Strategic Plan)
  - last updated 2009.
- 3.5 acres parkland per 1,000 residents
  - Park fee drives up the cost of housing
  - Waive fees for affordable housing?
  - Fewer parks for those who need it most: compact units w/o backyards.
- Have a park within 10-min (1/2 mile) walk of every resident
  - Necessary? Some parts of SJ are very sparse: few users per park
  - Sufficient? Some areas are very dense: parks need to be sized to accommodate all the users within the service area.
  - What to do about areas with unincorporated County pockets?



need for parks in  
commercial campus?  
picnics? lunch breaks?

central area:  
more development →  
more money for parks

west SJ: few parks, but  
many private backyards.

Downtown:  
are nearby parks  
adequate?

Also need to  
maintain our parks!

County pockets  
unserved?

underserved

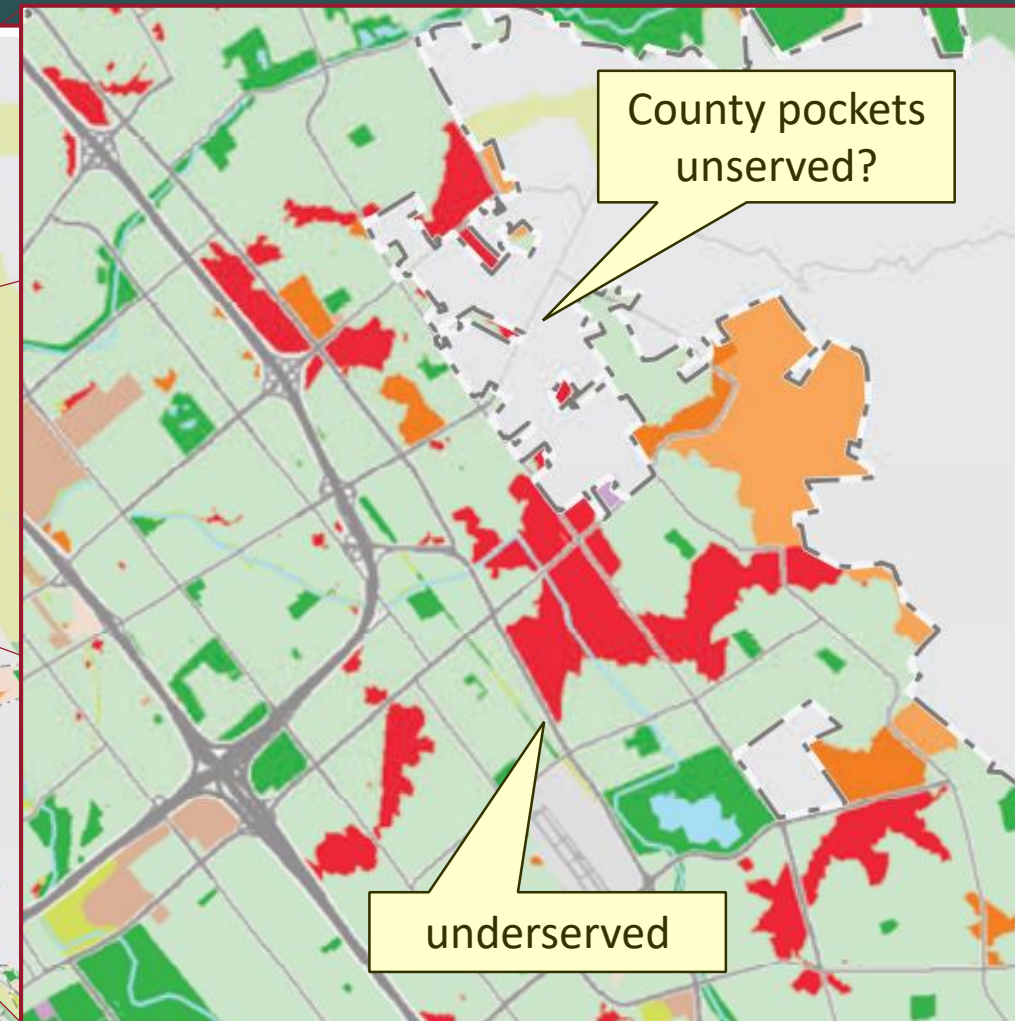
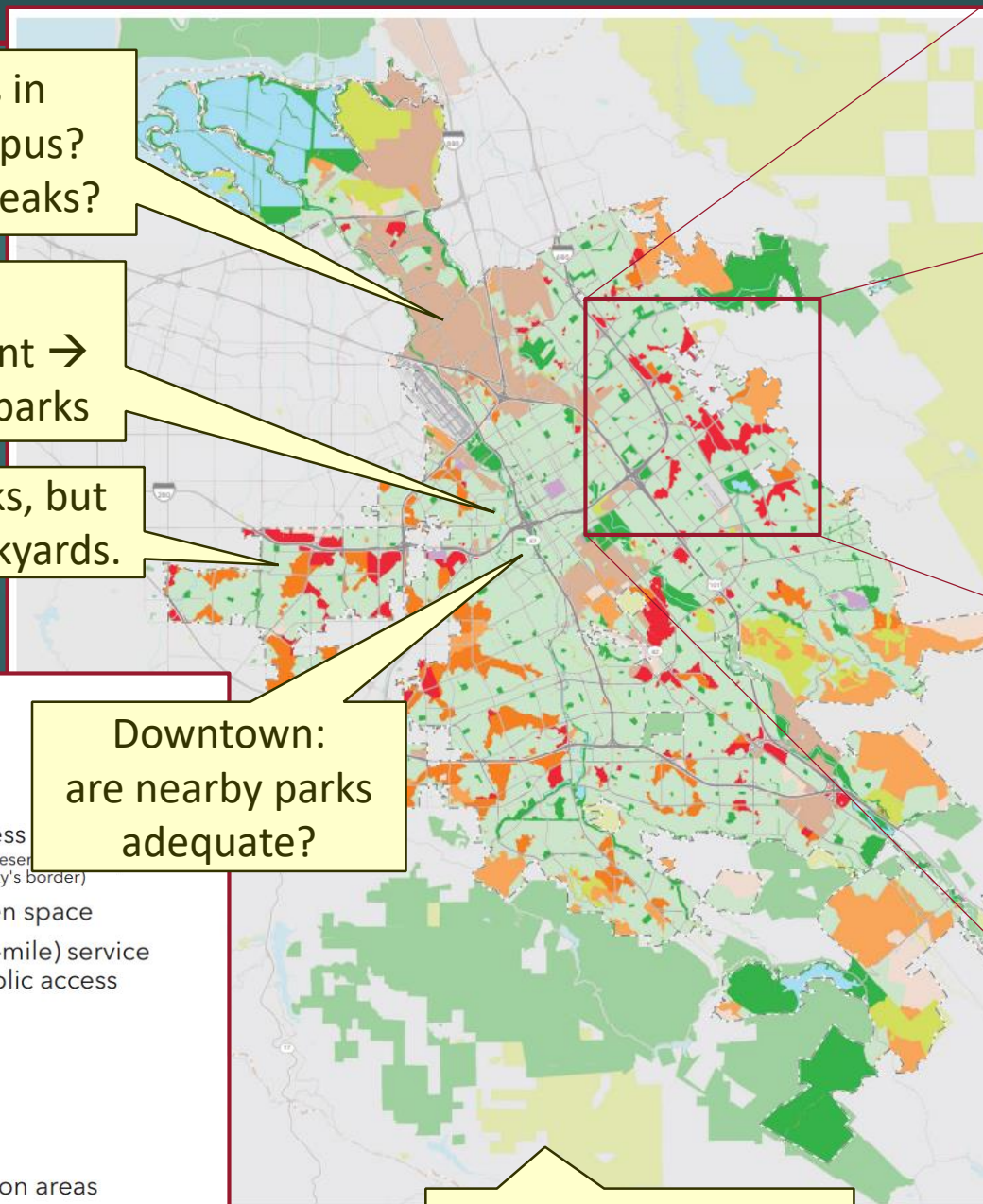
Partners:  
County Parks;  
Open Space Auth.;  
MidPen.

Level of park need

- Very high
- High
- Moderate

Park with public access  
(Might include only partial representation  
with public access along the city's border)

- Other parks and open space
- 10-minute walk (half-mile) service  
area of park with public access
- Cemetery
- University
- Military
- Industrial
- Vacant zero population areas
- City boundary
- County boundary



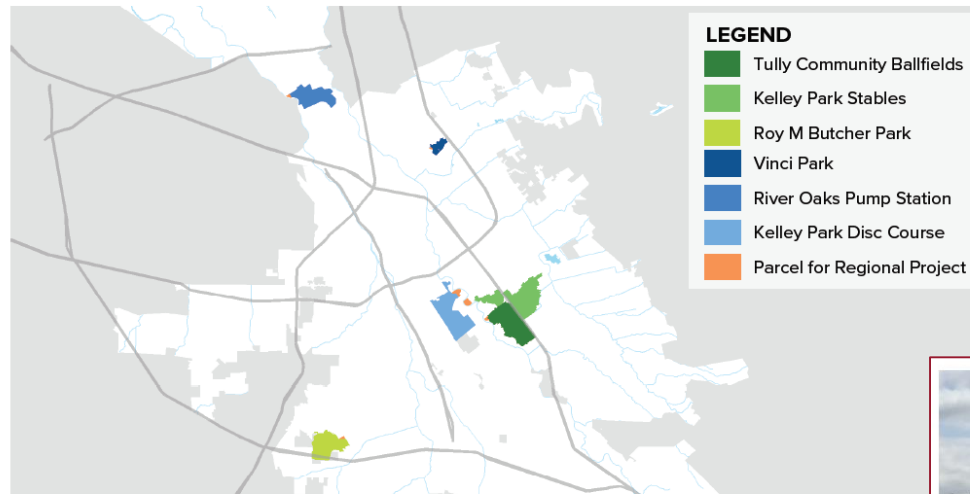


# Keep the Parks that we do have ...

- Part of Lincoln Glen park has been ceded over for Fire Station 37
- Other parklands are being considered for future fire stations
  - and libraries? and affordable housing?
- An undefined portion of Arena Green is to be ceded over to the San José Light Tower Corp. for some future “icon”
  - <https://www.sanjoselighttower.com/>
- The Green Stormwater Infrastructure (GSI) project has plans to use portions of city parks to capture and filter street runoff
  - marshy year-round: loss of use as parkland?
  - <http://www.sanjoseca.gov/index.aspx?NID=5722>



Drainage Area of Regional Project Candidates



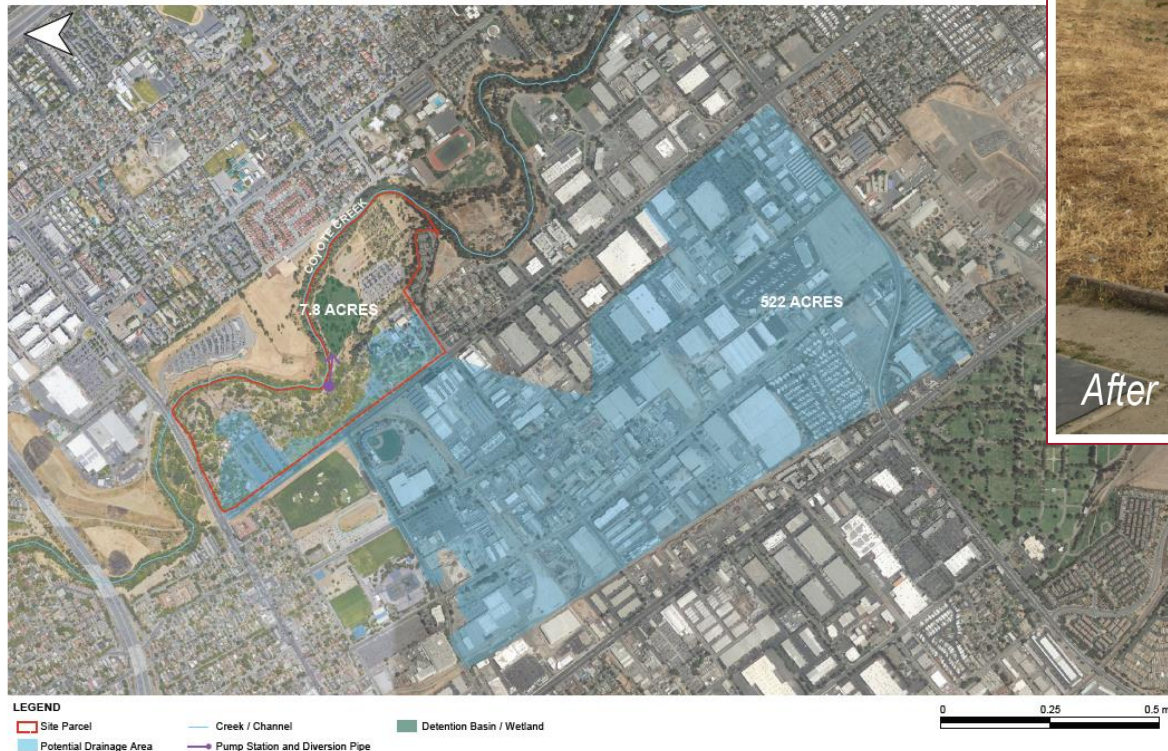
# Green Stormwater Infrastructure (GSI)



It's a nice illustration, complete with Photoshop'd birds. But land likely will be marshy due to run-off from broken sprinklers and washed cars, and contaminated by nearby industrial areas.

Sites selected by scores in a trade matrix:  
+5 points for the use of parkland,  
another +5 points if in a Disadvantaged Community ...

CONCEPT SITE DRAINAGE AREA





# Summary

- There are many things happening!
- There are many ways to become involved!

# Questions?

these charts are on-line at:  
[www.L-Ames.com/SVO\\_2019.pdf](http://www.L-Ames.com/SVO_2019.pdf)